

User Notes:

The Soil Survey Geographic (SSURGO) data base was produced by the U.S. Department of Agriculture, Natural Resources Conservation Service.

The soils were mapped at a scale of 1:24,000 with an approximate forty acre minimum delineation. Enlargement of the map to scales greater than that at which the soils were originally mapped can cause misinterpretation of the detail of the mapping. This scale of a soil map may be used as an aid in determining the potential for a characteristic soil property, in this case shrink/swell properties, for areas portrayed and displayed no greater than 1:24,000 scale.

The depicted soil boundaries and interpretations from this map do not eliminate the need for onsite sampling, testing, and detailed study of specific sites for intensive uses.

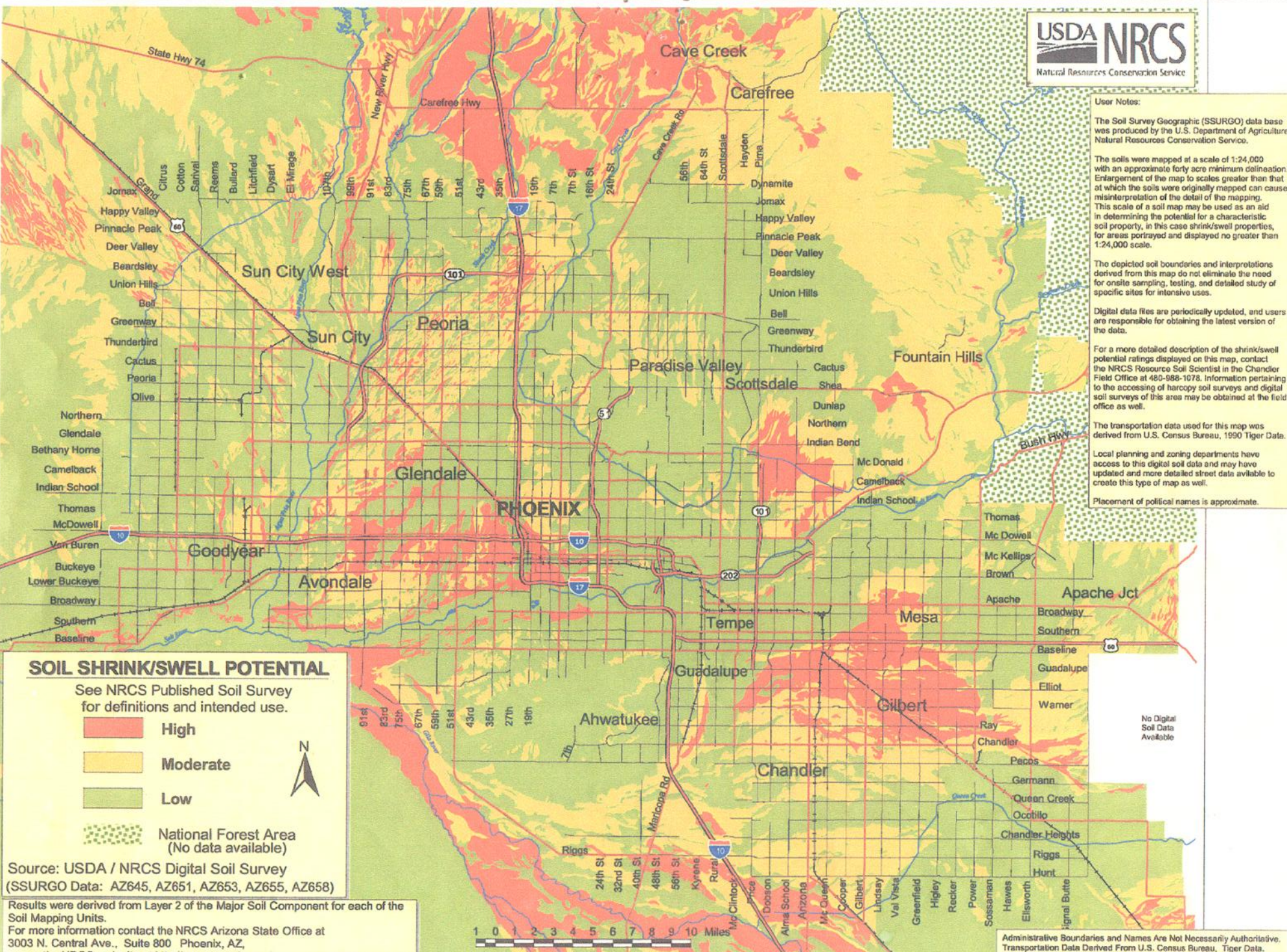
Digital data files are periodically updated, and users are responsible for obtaining the latest version of the data.

For a more detailed description of the shrink/swell potential ratings displayed on this map, contact the NRCS Resource Soil Scientist in the Chandler Field Office at 480-988-1078. Information pertaining to the accessing of harcopy soil surveys and digital soil surveys of this area may be obtained at the field office as well.

The transportation data used for this map was derived from U.S. Census Bureau, 1990 Tiger Data.

Local planning and zoning departments have access to this digital soil data and may have updated and more detailed street data available to create this type of map as well.

Placement of political names is approximate.



SOIL SHRINK/SWELL POTENTIAL

See NRCS Published Soil Survey for definitions and intended use.

- High**
- Moderate**
- Low**
- National Forest Area (No data available)**



Source: USDA / NRCS Digital Soil Survey (SSURGO Data: AZ645, AZ651, AZ653, AZ655, AZ658)

Results were derived from Layer 2 of the Major Soil Component for each of the Soil Mapping Units. For more information contact the NRCS Arizona State Office at 3003 N. Central Ave., Suite 800 Phoenix, AZ, or see the NRCS web site at <http://az.nrcs.usda.gov/>



Administrative Boundaries and Names Are Not Necessarily Authoritative. Transportation Data Derived From U.S. Census Bureau, Tiger Data. See "User Notes" for Additional Map Information and Disclaimers.